



27/27 HIGH STREET, Lutwyche

 2  2  2

27/27 HIGH STREET LUTWYCHE

Are you looking for a modern apartment that is located under 5.5km from the heart of Brisbane CBD and surrounded by a wonderful array of local amenities. Then this top floor modern apartment is perfect

This unit has a modern feel and features 2 bedrooms, main with ensuite, tiled living area which flows to the modern kitchen

Features include:

- * Two large bedrooms with built in wardrobes (main with ensuite)
- * Modern open plan kitchen with dishwasher, dining and lounge room
- * Air-conditioning in living and bedroom plus ceiling fans
- * Large private covered balcony
- * A secure car park with storage cage
- * Large rooftop area with BBQ perfect for entertaining

This unit is close to Lutwyche Shopping, transport including train, bus and the Airport Link tunnel, the Royal Brisbane Hospital and plenty of shops and restaurants and cafes .

To register for an inspection via realestate.com.au, please click on the

Unit Leased

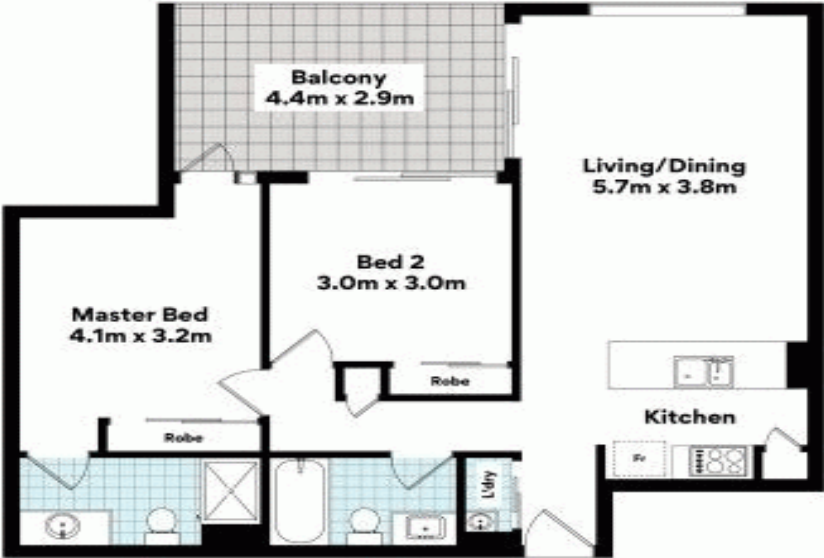
Listing ID : 61914070

Contact



BOOK AN INSPECTION TIME button. Please note " You must register your details to book an inspection time so that we can contact you if there are any changes.





27/27 High St, Lutwyche

FLOOR AREA SIZES

Internal 83m² | External 14m² | Car Space/Storage 20m² | TOTAL 117m²

While every attempt has been made to ensure the accuracy of the floor plans contained here, measurements of doors, windows, rooms and any other items are approximate and no responsibility is taken for any error, omission or misstatement. These plans are for representation purposes only. Provided by pulseprods.com.au